



Restaurant Solutions

Handwashing Fixtures, Washroom Accessories, Toilet Partition Cubicles



BRADLEYCORP.COM



Long-Lasting, Reliable with Global Appeal

Bradley understands that the designed space must be efficient and cost-effective, but also create a unique and engaging experience. And it needs to last; think durable and timeless. Bradley brings you nearly a century of commercial plumbing knowledge and innovation. State of the art specification service tools, skilled journeymen, keen vision and utmost care shape every product you'll use.

THE ANSWER TO YOUR RESTAURANT WASHROOM DESIGN CHALLENGES

Dining out is rarely just about the food. The anticipation of a special night out, the welcoming atmosphere of a favorite hangout, the prospect of a new culinary adventure are all equally important. When done right, a restaurant's design enhances these elements with the right colors, lighting, textures and fixtures. The design also carries over into the restrooms reflecting the creativity, sophistication and style the architect strives for using fresh handwashing solutions from Bradley.

Whether designing for the quick serve, fast casual, or fine dining experience, Bradley's handwashing solutions give you design flexibility that surpasses expectations. Built with superior craftsmanship and quality, here are the products that will help you create a beautiful, long lasting restroom for your restaurant space.



SEE THE NEW VERGE® WITH
WASHBAR™ TECHNOLOGY

PAGE 8



VERGE®

Make a Reservation with Verge® Handwashing Solutions

Verge® wash basins bring sophisticated forms in an elegant natural quartz material to your restaurant restroom. Verge basins are beautifully sculpted elongated basins featuring one-piece seamless construction which means no messy caulk lines or crevices for germs to hide. Verge basins are available in several designer-inspired shapes to complement your designs.

EVERO® Natural Quartz

Evero® is the first and only natural quartz material that can be molded into round and curved shapes giving you not only stunning design options to explore but a high performance product that is as beautiful as it is long lasting. It is a low maintenance material –no sealing or waxing required – and is GREENGUARD certified as a low-emitting material. Available in over a dozen colors.











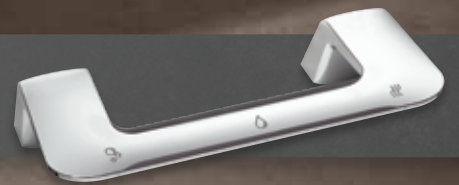
SMART NEVER LOOKED SO GOOD

Introducing the Verge® with exclusive WashBar™ Technology

From the inventor of all-in-one handwashing solutions, comes the Verge with WashBar. Providing a completely touchless handwashing experience, the WashBar houses soap, water and dryer in one intuitive and attractive component. End soap and towel waste and eliminate a cluttered wash space. This Verge basin, like our other Verge basins, is made of our high end/elegant Evero natural quartz material. Put this innovative ADA-compliant handwashing solution on the menu for your next restaurant design.



WASHBAR™ TECHNOLOGY









Advocate

Clean up with the Advocate Handwashing Solution

With the award-winning Advocate® AV Series, everything's within reach for the ultimate in convenience, comfort and safety. Advocate is a completely touch free all-in-one sink solution with soap, water and dual-sided hand drying for a safer, cleaner, handwashing experience. Advocate's bowls are available in Terreon or TerreonRE solid surface material. From unique casual dining to multi-location fast casual restaurants, Advocate helps keep restrooms as spotless as your glassware.

Terreon

Terreon® solid surface and Terreon®RE recycled solid surface last a lifetime and are easily repaired and renewed, minimizing the need for replacement or disposal. Terreon is a non-porous material which means it will not support the growth of mold, mildew or bacteria, all substances that can adversely affect indoor air quality. GREENGUARD-certified Terreon meets the highest industry quality and performance standards for solid surface materials. Available in dozens of colors.









OMNIDECK™ HANDWASHING SOLUTIONS

Beautiful customized basins to achieve your restaurant's unique design aesthetic and personality. You will find that OmniDeck delivers on all counts: completely seamless, customizable, prefabricated for ease of install and ADA-compliant for barrier-free accessibility. Choose from dozens of Terreon solid surface colors for decks and bowls, plus a variety of bowl shapes. From fast food and cafes to bistros and fine dining, OmniDecks provide the versatility you need to realize your special design need.



WASHROOM ACCESSORIES

Bradley's stainless steel washroom accessories provide the clean look your restroom requires. Diplomat accessories' dual-curves come in an array of products that provide a unique, cohesive aesthetic. Bradley's standard accessories sleek, linear appearance are a popular choice because they complement any design.



Diplomat™ Models

Dual curve design

With over 50 models and many with higher capacity sizes, Diplomat Accessories offer the widest design flexibility with a single aesthetic in the industry.



Standard Models

Simply classic

Hundreds of models available in recessed, semi-recessed, and surface-mounted styles.







Clockwise from left: Stainless steel with satin finish, Phenolic with wood-grain laminate, and Fusion granite.



MILLS® TOILET PARTITION CUBICLES



Bradley's Mills® Partition Cubicles are available in materials sure to please the designer's eye for style – stainless steel, powder coated, solid plastic, phenolic with virtually any laminate surface and Fusion™ – an elegant blend of stainless steel and granite provide the upscale look you want for your bistro or cafe.



LENOX® LOCKERS

A bank of lockers is a nice touch in the employee break room. Consider the benefits of Lenox® when selecting lockers for a restaurant project. Plastic lockers won't rust or dent and will never need to be repainted. They are easy to keep clean in food preparation areas that are frequently wet or humid and come in a variety of colors and styles. They also come with an industry leading 20-year guarantee.

Lock options



Key



Combination



Coin-operated











DCL keypad

Combination padlocks also available.

SAFETY & HEATING SOLUTIONS

Emergency Plumbing Fixtures help prevent serious eye injuries and are essential components when cleaning supplies and chemicals are near by such as in kitchens and cafeterias. Bradley's Halo technology provides 85% facial coverage - 20% more than other available products. Our broad product line includes eyewashes, drench showers and portable units.

Examples of stored chemicals that would warrant the placement of an eyewash or eye/face wash

Chemical	Hazards
Floor Stripper/ Floor Finish Remover	  Corrosive Irritant
Oven Cleaners/Degreasers	  Corrosive Irritant
Alcohol-Based Hand Sanitizers	  Flammable Irritant
Bleach	 Corrosive
Hydrogen Peroxide	 Irritant



Above top:
Cabinet-mounted
Halo Eye/Face Wash
Model S19284)

Above bottom:
Deck-mounted Side
Swing Halo Eyewash
Model S19274C



Wall-mounted Halo
Eyewash with dust cover
Model S19224PDC



Keltech® electric tankless water heaters provide a continuous supply of high temperature water for the toughest demands in a commercial restaurant. Engineered to the toughest standards, Keltech heaters ensure that water is heated to precisely the right temperature for cleaning and sanitizing. And, unlike tank heaters, they don't require a lot of space. From dishwashers, 3-compartment sinks and mop sinks, to restroom sinks and hand sinks, Keltech heaters could be the difference between being shut down or being open for business.



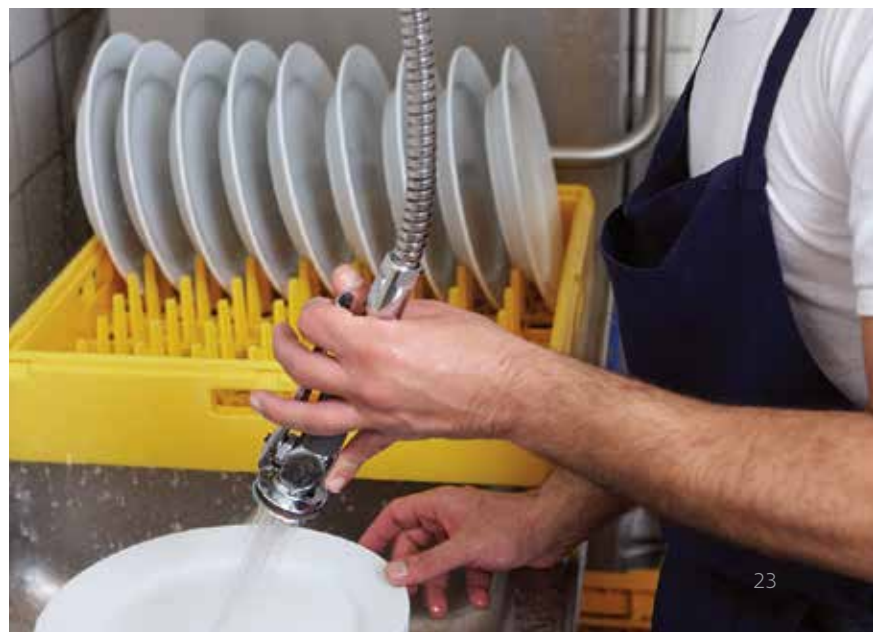
HL-Series
Commercial
Tankless
Water Heater



C1N Light
Industrial
Tankless
Water Heater



C2N Light
Industrial
Tankless
Water Heater





VISIT BRADLEYCORP.COM FOR INDUSTRY-LEADING **BIM-REVIT/SYSQUE** LIBRARY

+1 262 251 6000
800 BRADLEY bradleycorp.com
W142 N9101 Fountain Boulevard
Menomonee Falls, WI 53051 USA
4204-3.5-0217

